

---

Chicago Interface Group, Inc.

# Breeze for SCLM User Guide

*Version 1.1*

Chicago Interface Group, Inc.  
858 West Armitage Avenue # 286  
Chicago, IL 60614 USA

Phone: (773) 524-0998  
Fax: (815) 550-6088  
Email: [cigi\\_sales@cigi.net](mailto:cigi_sales@cigi.net)  
Web: [www.cigi.net](http://www.cigi.net)

Breeze is a trademark of Chicago Interface Group, Inc.  
SCLM and z/OS are registered trademarks of IBM.

Breeze for SCLM, version 1.1

All rights reserved. © Copyright by Chicago Interface Group, 2005.  
Documentation Version August 17, 2005

---

# Contents

<b>Chapter 1: Overview</b>	<b>1</b>
<b>Introduction</b> .....	<b>1</b>
<b>Packages: An Overview</b> .....	<b>1</b>
What is a Package? .....	1
What is a Package for SCLM?.....	1
Package Types .....	2
What is in a Package? .....	2
What are the Benefits of Using Packages? .....	2
<b>Approvers: An Overview</b> .....	<b>3</b>
What is an Approver? .....	3
What is an SCLM Approver? .....	3
How do approvers get assigned to an active package? .....	3
Why Bother with Notification?.....	3
The Approval Process .....	3
<b>Chapter 2: Getting Started</b>	<b>5</b>
<b>Assumptions</b> .....	<b>5</b>
Sample Life Cycle Configuration .....	5
Four Steps to Breeze Package Processing .....	6
<b>Typical Usage Scenario</b> .....	<b>7</b>
Performing SCLM Build on Package .....	7
The Promote Step.....	7
Invoking the CAST Function.....	8
Status of APPROVED after CAST.....	8
Promote Exit Processing: New, Promoted or Blank Status .....	8
Promote Exit Processing: PENDING STATUS .....	10
Build Exit Processing: APPROVED STATUS .....	10
Promote Exit Processing: VETOED STATUS.....	11
The Approval Step .....	11
Actual Promote: Approved Status .....	12
Promote Exit Processing: Purge.....	13
BZZSAPS1 – Submit Utility .....	13
<b>Chapter 3: Approving packages on the web</b>	<b>14</b>
<b>Overview</b> .....	<b>14</b>

How it Works .....	14
Getting to Know the Breeze for SCLM Interface .....	15
<b>Area 1: The "In" Box .....</b>	<b>16</b>
"Requiring My Approval" .....	16
Packages by Status .....	17
<b>Area 2: Filtering Options .....</b>	<b>18</b>
Filtering Area .....	18
Filtering Options .....	18
<b>Area 3: Package Area .....</b>	<b>20</b>
Approving and Vetoing Packages .....	20
Approving Packages .....	20
Select a Package ID .....	21
Launch the Approve Dialog Box .....	21
Approve Dialog Box Functionality .....	21
Adding Notes .....	22
Add Notes Panel Functionality .....	22
Submitting Approval .....	23
Submit Panel Functionality .....	23
Vetoing Packages .....	24
Select a Package ID .....	24
Launch the Veto Dialog Box .....	24
Veto Dialog Box Functionality .....	25
Adding Notes .....	25
Add Notes Panel Functionality .....	26
Submitting a Veto .....	26
Submit Veto Panel Functionality .....	27
<b>Area 4: Package Options Area.....</b>	<b>28</b>
Package Summary .....	28
Package Contents .....	29
Browse, Audit, Changes .....	30
Browse .....	30
Audit .....	30
Changes .....	31
Package Log .....	31
Package Collisions .....	32
Ballot Box .....	32
Package Notes .....	33

## **Chapter 4: Troubleshooting 34**

<b>Overview .....</b>	<b>34</b>
Class/Jar Not Found or Class/Jar Can't Load .....	34
No Response .....	35
Not Allowed to Use Applet or Security Error .....	35
Log In Fails .....	36
JCL Errors .....	36
Storage Errors .....	36

Java not Enabled on Browser or Virtual Machine Not Loaded .....	37
CIGINI Errors .....	37
TCP/IP Errors.....	38
Email Errors .....	38
Query Errors.....	38
Data Display Errors.....	38

**Index**



---

# Chapter 1: Overview

## Introduction

Breeze for SCLM is a packaging and approval product designed to enhance the package processing capabilities of SCLM. Breeze allows users to:

- ❑ assign approvers to inventory
- ❑ approve or veto packages
- ❑ notify both approvers and management via a web interface when there is production turnover in need of review.
- ❑ Submit SCLM promote processing through sweep technology

By enhancing SCLM's proven technology and extending it out to the Web, Breeze provides a solution for both developers and managers who are looking to leverage SCLM's strengths as a powerful development and source management tool.

## Packages: An Overview

### What is a Package?

A package is a collection of source changes that migrate through an application life cycle and eventually end up in a production environment. A package can also contain non-source binary files that are being managed in the life cycle.

### What is a Package for SCLM?

A package for SCLM is a member that contains one or more high-level architectural definitions (ARCHDEF) to be processed together.

## Package Types

Packages for SCLM can be either Standard or Emergency, a distinction that affects only the notification and approval processes associated with package processing. For example, standard packages almost always require approval. When a standard package is ready to be promoted, an email message will be sent to the relevant approvers notifying them that a source change is ready to be promoted and is in need of approval. Emergency packages can sometimes override the approval process, but management will still be notified via email that a promotion has taken place.

## What is in a Package?

SCLM packages typically contain any or all of the following:

- Source code
- ISPF panels
- Archdefs
- Text-based items
- JCL
- Maps
- Anything that can be managed by SCLM

## What are the Benefits of Using Packages?

Grouping component data into packages enables tracking and audit functions that can record when source changes are moved into production as well as who moved them.

Promoting packages, instead of separate executables, ensures that change levels are implemented at the same time.

Controlling the migration of packages via promotion windows ensures that there are no random implementations of change in your production environment.

Employing an approval system provides system-wide accountability for changes moved into production.

Assigning approvers to packages based on inventory location of package components ensures that key managers have control over and ownership of the decisions to move source changes forward.



# Approvers: An Overview

## What is an Approver?

An approver is a user assigned to monitor changes within a certain inventory location.

## What is an SCLM Approver?

An SCLM approver is a group of 1-n users with email and/or TSO notify access that has been assigned through a notify utility to monitor a certain inventory location.

## How do approvers get assigned to an active package?

At SCLM promote time the package member will go through an SCLM exit called PVERIFY. If Breeze determines that the member is a high level architectural member and that the content of the package has approvers defined, it will perform the CAST process. This CAST process will collect approvers, notify approvers, and set the package in PENDING status.

## Why Bother with Notification?

There are two types of notification associated with package approvals: Email and TSO Notify. Most organizations typically use both, because as indicated in the table below, not all managers have TSO access. Additionally, there is no reliable way to track and keep a record of messages that are sent via TSO Notify.

Type of Notification	Managerial Access?	Trackable?
Email	Yes	Yes
TSO Notify	No	No

## The Approval Process

During the CAST process, Breeze for SCLM collects and stores the following approver data:

The number of approver groups (1-n) that are assigned to monitor the movement of the package.

The package quorum, i.e., the number of approvers required to vote before that package can be promoted.

"Required" approver status. Individual members of the approver group(s) may be designated as "required" approvers, i.e., that particular approver MUST vote on the package before it can be

promoted. If the package quorum has been reached, but a required approver has not voted, the package cannot be promoted.

Email addresses of all approvers.

Breeze then automatically notifies any relevant approvers that there are packages in need of approval. Approvers, however, do not have to wait for notification to access the Breeze product. Approvers should contact their Breeze Administrator for instructions on accessing Breeze from a desktop.

---

# Chapter 2: Getting Started

## Assumptions

This chapter assumes the following knowledge on the part of the reader:

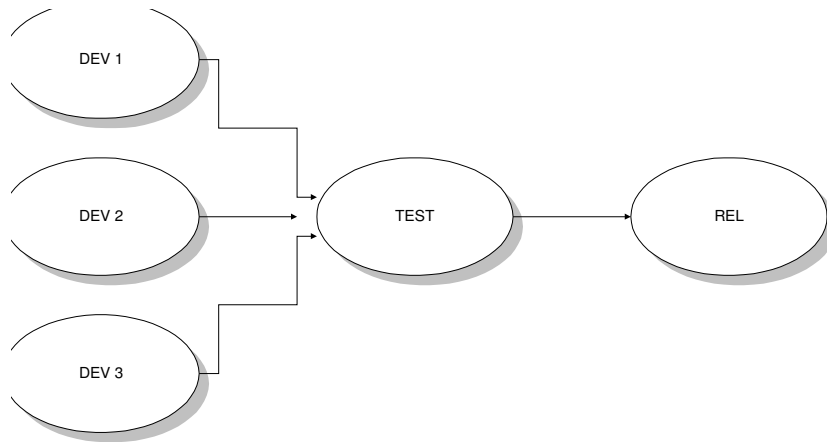
1. The user has read and understands the concepts of packaging and approvers as presented in Chapter 1 of this manual.
2. The user has working knowledge of the SCLM product.
3. The user understands his/her development life cycle.

## Sample Life Cycle Configuration

Using the standard sample configuration recommended by IBM, we will now walk through the creation, approval, and promotion of a simple package.

In the IBM model, there are 1-n separate development environments; in the example shown below, there are three: DEV 1, DEV 2, and DEV 3. These environments could be product specific, department specific, or task specific, i.e., maintenance. All source changes made in these environments are promoted to a testing environment (TEST) for quality assurance purposes before they are moved into production, or the Release environment (REL).

Note that packages can be pre-defined and represent an entire application or they can be built "as needed."



*Model Life Cycle Map*

Within this lifecycle, several user defined types are maintained. For instance both host and distributed objects may exist within the same life cycle. Also, both source based and binary based objects may exist in the same life cycle.

The object types are distinguished through the TYPE and Language definitions of SCLM.

## **Four Steps to Breeze Package Processing**

There are four steps to Breeze package processing.

1. User creates and performs an SCLM Build on a package member.
2. User CASTS the package members by requesting the initial Promote. All approvers are collected and notified.
3. Approvers review and vote on the package via the Browser interface or the Breeze batch voting utility.
4. User performs an SCLM Promote of the package successfully to the next group.

Let's review these steps in that order.

---

## Typical Usage Scenario

Jane the developer is instructed to make changes to four COBOL programs to satisfy a change request form. She uses the DEV1 environment to make and to compile her changes. After performing her own unit testing, she hands off the changes (via a package) to the QA group for testing and acceptance. The figure below is what Jane's actual package looks like:

```
EDIT      SCLMTEST.DEV1.PACKAGE(PKG1) - 01.08      Columns 00001 00072
Command ==>                                         Scroll ==> CSR
***** Top of Data *****
000001 INCLD  TEST01      SOURCE
000002 INCLD  TEST02      SOURCE
000003 INCLD  TEST03      SOURCE
000004 INCLD  TEST04      SOURCE
```

### Performing SCLM Build on Package

After constructing the package, Jane goes to the SCLM build screen, shown below, and requests to build the package, using standard SCLM services.

```

                                     SCLM Build - Entry Panel
Command ==>

Build input:
Project . . : SCLMTEST
Group . . . DEV1
Type . . . . PACKAGE
Member . . . pkg1
                                     Enter "/" to select option
                                     / Error Listings only
                                     Workstation Build

Mode . . 1  1. Conditional           Scope . . . 2  1. Limited
                                     2. Unconditional       2. Normal
                                     3. Forced                 3. Subunit
                                     4. Report                 4. Extended

Output control:
Ex Sub
Messages . . 3 3  1. Terminal       Process . . 1  1. Execute
Report . . . 3 3  2. Printer         2. Submit
Listings . . 3 3  3. Data set       Printer . . H
                                     4. None                          Volume . . .
```

Figure 1. SCLM Build Request

### The Promote Step

The actual promote process is a combination of standard SCLM promote functions and Breeze exit point processing. Promote has three phases:

1. Verify
2. Copy
3. Purge

## Invoking the CAST Function

The Breeze exits use the Verify and Purge exit points.

Once the package has gone through a successful SCLM Build action, it is eligible for Promotion and CAST processing. The CAST function happens at the start of the SCLM Promote process, specifically, at the Pre Verify Exit point. The CAST processing only occurs if the package is new, has a status of PROMOTED or a blank status.

## Status of APPROVED after CAST

There are two conditions that cause the package status to go automatically to APPROVED. The first case is when the package does not contain inventory that qualifies for approvers. In this case the package will be automatically APPROVED and thus continue on with the SCLM Promote request. The second case is when there are approvers, but the quorum for all approver groups is set to zero. This condition will also cause the package to be automatically APPROVED and thus it will also continue on with the SCLM Promote request. Note that in the second case, the approvers will be still notified that the package was promoted.

```
Menu  SCLM  Utilities  Jobcard  Help
-----
                                SCLM Promote - Entry Panel
Command ===>

Promote input:
Project . . . : SCLMTEST
From group . . DEV
Type . . . . . packages
Member . . . . PKG1

Mode . . 1  1. Conditional          Scope . . . 1  1. Normal
                2. Unconditional      2. Subunit
                3. Report                3. Extended

Output control:
                Ex Sub
Messages . . 3  3  1. Terminal          Process . . 1  1. Execute
Report . . . 3  3  2. Printer                2. Submit
                3. Data set          Printer . . H
                4. None              Volume . . .
```

Figure 2. SCLM Promote Request

## Promote Exit Processing: New, Promoted or Blank Status

What happens during Promote Exit processing varies depending the status of the package. If the package is in PROMOTED or BLANK status, then the following steps will take place.

1. Verify that the member contains HL ( high level ) definition.

2. If the package exists already, refresh the ISPF variables with the existing data
3. Display the ISPF panel for input ( foreground only) as shown below:

```

Menu  SCLM  Utilities  Jobcard  Help
- .----- Breeze Package Attribute Input Panel ----- .-----
| Command ==>
C |
| For the current SCLM package member:
P |   Package id. . PKG2                Existing package?. . N
|
| Enter or modify the package description:
|   Description . IBM BREEZE FOR SCLM PACKAGE
|   Package type. STANDARD            (standard or emergency)
|
| Enter promotion date window: (YY/MM/DD and HH:MM formats)
|   Promotion window start date. . 02/06/26  time. . 11:36
|   Promotion window end   date. . 80/12/31  time. . 12:59
|   (YY after 80 is considered to be 19YY)
O |
|
|   End = Stop Promote   Enter = Continue   Pf1 = Help
|
|-----|
|
| 4. None                Volume . .

```

Figure 3. Breeze Package Prompt

4. Determine and store content of packages
5. Attach approver groups and email each individual user
6. For existing packages, purge all old records associated with the package name. If there is package down the path, pull the log records forward to this package and delete the old previous package data.
7. Display an approver summary reminder of promotion eligibility, as shown below:

```

Menu  SCLM  Utilities  Jobcard  Help
- .----- Package Approver Reminder Prompt ----- .-----
| Option ==>
C |
| The package  PKG2                has 0004 approver
P | groups assigned, containing 0010 individual approvers
| of which 0002 are required.
|
| The package is not eligible for promotion until the
| package is approved. All users have been notified that
| their vote is required.
|
| To approve or veto the package promotion, please use
| the Breeze for SCLM Web Interface.
O |
|
|   End = Return   Help = PF1
|
|-----|
|
| Report . . . 3 3    2. Printer
|                   3. Data set    Printer . . H
|                   4. None        Volume . .

```

Figure 4. Breeze Approval Prompt

**Promote Exit  
Processing:  
PENDING STATUS**

Once the package has been CAST in the Pre Verify exit, the package cannot be promoted until the status is set to APPROVED. If a user attempts to promote a package that has a Breeze status of PENDING, they will receive the following ISPF reminder prompt.

```

Menu  SCLM  Utilities  Jobcard  Help
- .----- Package Promote Status Error -----
-----
| Option ==>                                PROMOTE FAILED |
C |
P | The package  PKG2                is in the wrong status |
  | to be promoted. The current status is  PENDING      . |
  |
  | The package is eligible for promotion only when the   |
  | package status is  APPROVED.                          |
  |
  | Please review the current ballots for this package    |
  | through the Breeze for SCLM Web Interface.            |
  |
  |                                     End = Return      | t
  |                                                         | ed
O |-----
Messages . . 3 3    1. Terminal                               2. Submit
Report . . . 3 3    2. Printer
                                     3. Data set           Printer . . H
                                     4. None                 Volume . .

```

Figure 5. Promote Failed Panel

**Build Exit Processing:  
APPROVED STATUS**

If a user attempts to build a package that is in “APPROVED” status, they will receive the following informational messages (from Breeze) during the build process:

```

FLM49000 - INVOKING BUILD PROCESSOR
FLM09002 - THE REPORT WILL APPEAR IN P390P.BUILD.REPORT37
FLM09004 - THE MESSAGES WILL APPEAR IN P390P.BUILD.MSGS37
FLM09006 - THE LISTING WILL APPEAR IN P390P.BUILD.LIST37
FLM87107 - RPTARCH SUCCEEDED FOR MEMBER PKG2 AT 11:09:45, CODE: 0
BREEZE NOTIFICATION:PKG2 must be re-approved due to SCLM Build. P390P
P390P
*****
* WARNING! *
* Status has been cleared for package PKG2 *
* Contents of the package may have been changed due to *
* invocation of the BUILD function. The package must be *
* re-approved. Perform a PROMOTE function to invoke the *
* re-approval process. *
*****
FLM09008 - RETURN CODE = 0
***

```

The package and contents were rebuilt and might have changed since Cast or Approval processing. Breeze cleared the package status to ensure approval integrity. The approval process must be invoked (again) for this package (cast and approval) before the package can be promoted to the next group.



## Promote Exit Processing: VETOED STATUS

If a user attempts to promote a package that has a VETOED status, they will receive the following ISPF reminder prompt. This means that the package has been VETOED and will not be promoted from the current location.

```
Menu  SCLM  Utilities  Jobcard  Help
- .----- Package Promote Status Error -----
-----
| Option ==>                                PROMOTE FAILED |
C | The package  PKG2                          is in the wrong status |
P | to be promoted. The current status is  VETOED  . |
| The package is eligible for promotion only when the |
| package status is  APPROVED. |
| Please review the current ballots for this package |
| through the Breeze for SCLM Web Interface. |
| End = Return |
O |
-----
Messages . . 3 3    1. Terminal                2. Submit
Report . . . 3 3    2. Printer
                                     3. Data set      Printer . . H
                                     4. None          Volume . . .
```

Figure 6. Vetoed Package Error Panel

## The Approval Step

Breeze has emailed each of the users assigned to approve the package. Based on the location and the approver group definition, one or more of the approvers will have to approve Jane's package before it can be promoted into the TEST environment. Until the package status changes to 'APPROVED,' the package contents cannot be promoted forward.

The user has two options for approving or vetoing the package. The first option is the BZZSMJV1 vote utility. This is a batch utility for voting or vetoing. The JCL for this utility and syntax definitions can be found in the Breeze for SCLM Planning and Administrator Guide. The second option for approving or vetoing is the Breeze Browser Applet. Chapter 3 of this manual documents this component fully.

One way or another, the package must be approved prior to the actual SCLM promote to take place. For our purposes, we will assume that the package has been approved and we are ready to promote the package.

---

The who and why of approver design has already been decided at this point (By Jane's managers) and is covered in more detail in the Advanced Topics chapter of the Breeze for SCLM Administrator Guide.

---

## Actual Promote: Approved Status

Once the package has a status of APPROVED, the real SCLM Promote can take place. First SCLM will perform its verification, then Breeze will perform its verification. The following tasks will be performed at the Breeze Verify exit point:

- 1) Verification that the member contains HL statements
- 2) Validation of the status and the execution window:
  - a) If today's date is not in the execution window, Breeze will display the following panel:

```
Menu  SCLM  Utilities  Jobcard  Help
- .----- Promotion Window Range Error ----- . ---
-----
| Command ==>                                     PROMOTE FAILED |
C |
| The promote request for package id  PKG2          |
P | has been rejected due to a promotion date window |
| range error.                                     |
|
| Today's date . . 02/07/01  time. . 13:18         |
|
| Planned promotion window:                        |
| Promotion window start date. . 02/06/30  time. . 13:11 |
| Promotion window end   date. . 02/07/01  time. . 13:11 |
|
O |                                     End = Return  Pfl = Help  |
-----
```

Figure 7. Execution window failure panel

- b) If Breeze encounters a package with the same name at the target location with a status of PROMOTED, then Breeze will display the following panel:

```
- .----- Package Target Status Error ----- . ---
| Option ==>                                     PROMOTION FAILED |
C |
| The package  PKG2                               exists at the target |
P | group DEV   and has a status of PROMOTED      . |
| There are changes pending at the target group   |
| that must be promoted. To continue promoting the |
| current package from group GH                   either perform a |
| Breeze Package CLEAR operation against the package |
| at the target group or use a different package name. |
|
| See Breeze Planning and Administration Guide for   t
| more information on running the BZZSMJD1 job to run | ed
| program BZZSAPD1 utility.                         |
O |                                     End = Return          | e
-----
```

Figure 8. Possible collision / duplicate package error panel

If Breeze allowed the package to be promoted without notification, the integrity of the change at the target group could be jeopardized. If the change must be promoted, follow the panel instructions and submit the BZZSMJD1 utility to clear the package status at the target group.

- c) If Breeze encounters a password error or a database error, then Breeze will display the following panel:

```

----- Promote Verify Exit Failure -----
| Command ===>
|
| The promote request for package id PKG1
| has been rejected due to an undetermined error during
| database processing. The error occurred during the
| promote verification exit, thus the SCLM promote will
| not occur.
|
| Possible errors are database or password failures.
| Check CIGLOG for more information.
|
| End = Exit   Enter = Process   Pf1 = Help
-----

```

Figure 9. Password or Database failure panel

## Promote Exit Processing: Purge

Phase 3 of the Promote process is the Purge function. Prior to deleting the source, Breeze invokes a Purge exit. The actual SCLM Promote is complete, but Breeze performs the following actions at this Purge exit point:

1. Breeze will update header info and return control to SCLM.

If Breeze encounters an error during Promote Exit processing, then the following panel will be displayed:

```

----- Promote Purge Exit Failure -----
| Command ===>
|
| The promote request for package id  PKG1
| failed during purge exit processing. Regular purge
| processing will continue, however, the package should
| be rebuilt at the target location to ensure that
| approvers and contents are correct.
|
| Possible errors are database or storage failures.
| Check CIGLOG for more information.
|
| End = Return   Pf1 = Help
-----

```

Figure 10. Promote failure panel

## BZZSAPS1 – Submit Utility

As mentioned earlier in this chapter, the promotion of qualified packages will be determined by the life cycle usage and by the production turnover policy of the company. Other than the standard, batch versus foreground, decision, Breeze provides a utility for automating the submission of qualified packages.

The BZZSAPS1 utility can be run adhoc or as a job through a scheduler. The utility will interrogate the package file and find all approved packages that have a current execution window. These package promotes will be submitted as batch jobs.

See the *Breeze for SCLM Administration Guide* for more information on using this utility.

---

# Chapter 3: Approving packages on the web

## Overview

Using the web-based component of Breeze, users can request a list of packages that are in need of approval. They can select one of the packages from the list, review the contents, review the notes, and then approve or veto the package. Depending on the quorum, the casted vote will set the overall vote of the approver class. If one approver class vetoes the package, then the package is vetoed. If one of the classes does not vote, then the package remains in 'waiting on approval' status.

## How it Works

When a source change is made, an email is sent to all approvers in the relevant approver group indicating that there are packages in need of approval. Within the email message is a link that launches the Breeze for SCLM product. (Check with your systems administrator for alternative methods of accessing Breeze).

Once the Breeze for SCLM product downloads from the mainframe, you will be prompted with a log in screen, shown below. Enter your mainframe user id and password and click OK.

Welcome to Breeze for SCLM from CIG, Inc.

Name:

Password:

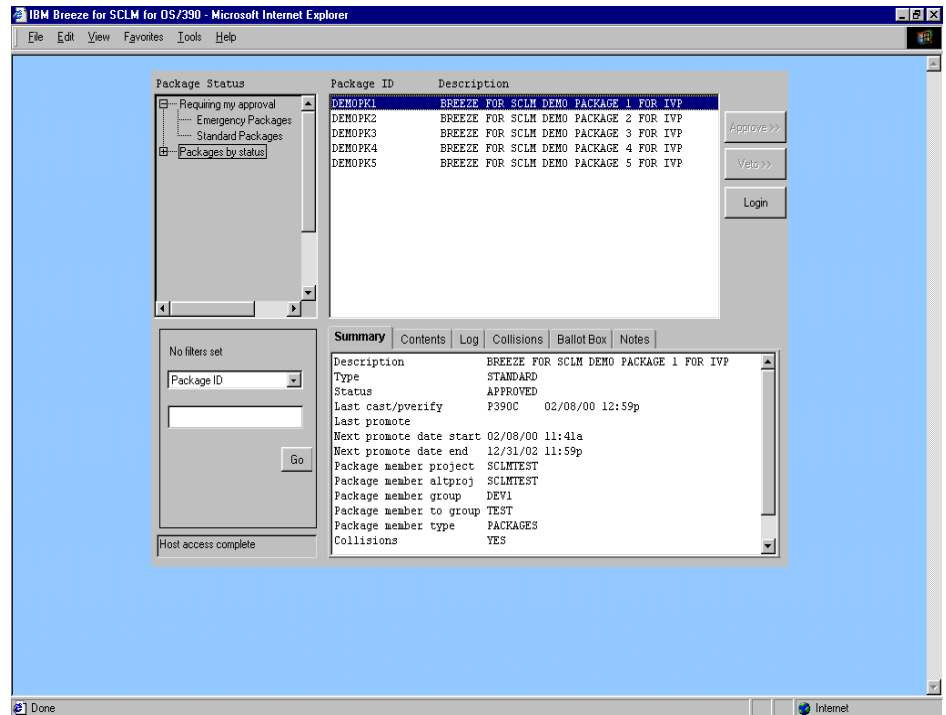
Please login.

Clicking on the About button will display version and release information about the Breeze for SCLM product.

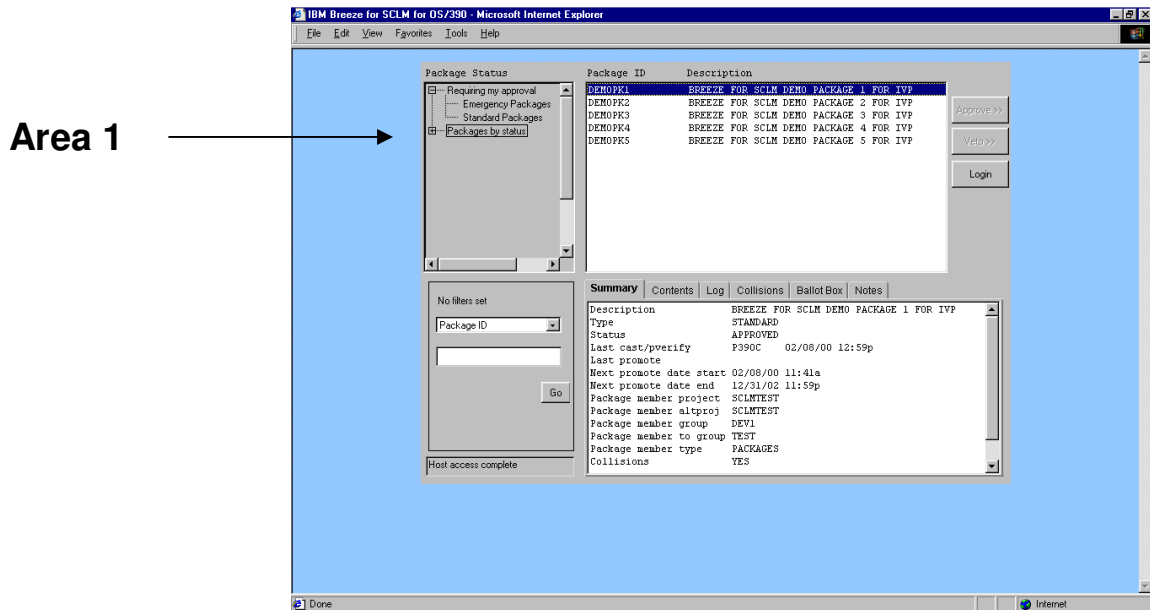
## Getting to Know the Breeze for SCLM Interface

The Breeze for SCLM interface is divided into four sections:

1. The "in-box," which allows users to select packages grouped by approval and execution status.
2. The filtering area allows users to limit the items in the package area using standard SCLM filters.
3. The package area includes Package Ids and Descriptions based on the in-box selection.
4. The tabbed area at the bottom of the interface contains highly detailed package information, including contents, log, collision information, ballot box and notes.



## Area 1: The "In" Box



The in-box contains two major package groupings:

Requiring my approval  
Packages by Status

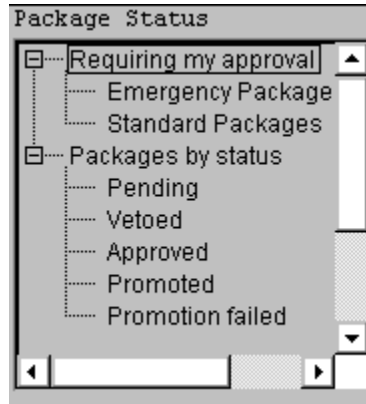
### "Requiring My Approval"

Breeze for SCLM defaults to this selection each time the product is launched. As shown in the figure above, the "Requiring my approval" heading is highlighted, and all packages requiring your approval are displayed in area 3-the package area-of the Breeze for SCLM interface.

If you wish to view only Emergency packages or only Standard packages, simply left-click on the selection and Breeze for SCLM will display your selection in the package area of the interface.

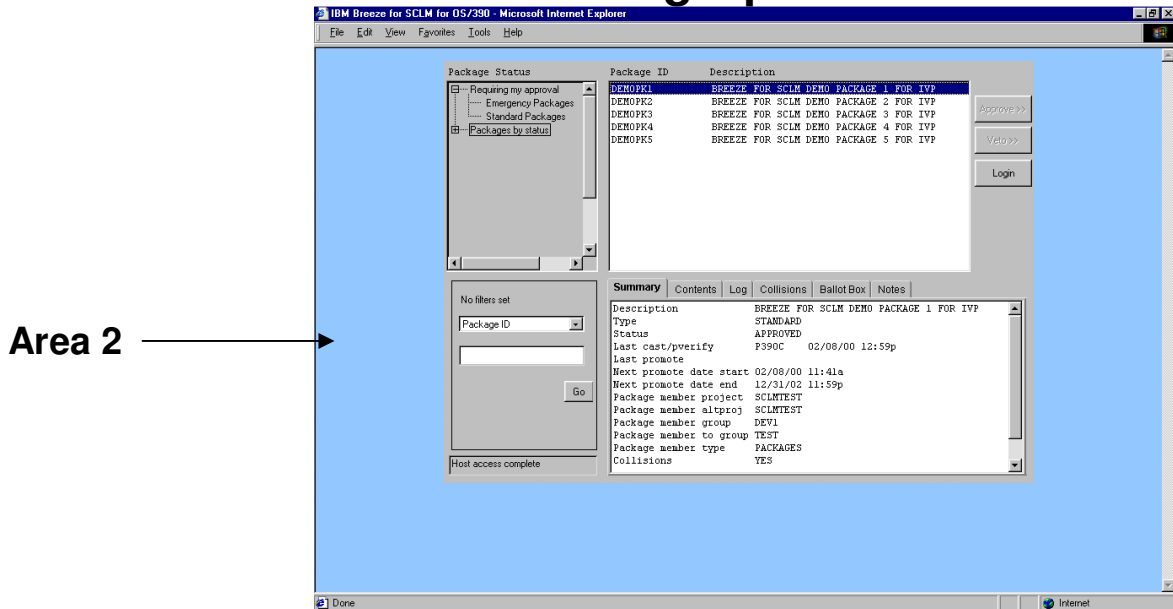
## Packages by Status

There are five "by status" options available from the in-box. Left-click on the selection of your choice and Breeze for SCLM will display the relevant data in the package area of the interface.



<b>Pending</b>	Lists all packages, both emergency and standard, that are awaiting approval.
<b>Vetoed</b>	Lists all packages that have been vetoed for promotion.
<b>Approved</b>	Lists all packages that have been approved, but have not yet been promoted.
<b>Promoted</b>	Lists all packages that have been approved and successfully promoted.
<b>Promotion Failed</b>	Lists all packages that have failed in promotion.

## Area 2: Filtering Options



### Filtering Area

The filtering area is comprised of the following:

- A pull-down menu of filtering choices, discussed below
- An input box
- A GO button, that begins the search
- A status window

### Filtering Options

The filtering options allow you to limit query results based on various package details.

<b>Package ID</b>	1 to 16 character SCLM package id
<b>Execution Window</b>	The timeframe in which the package can be executed
<b>Build User ID</b>	Mainframe user id of the person who built the package
<b>Promote User ID</b>	Mainframe user id of the person who promoted the package



<b>Promote Date</b>	Date package was promoted and placed in-approval status
<b>Last Update User ID</b>	Mainframe user id of the person who made the last update to the package
<b>Last Update Date</b>	Date the package was last updated

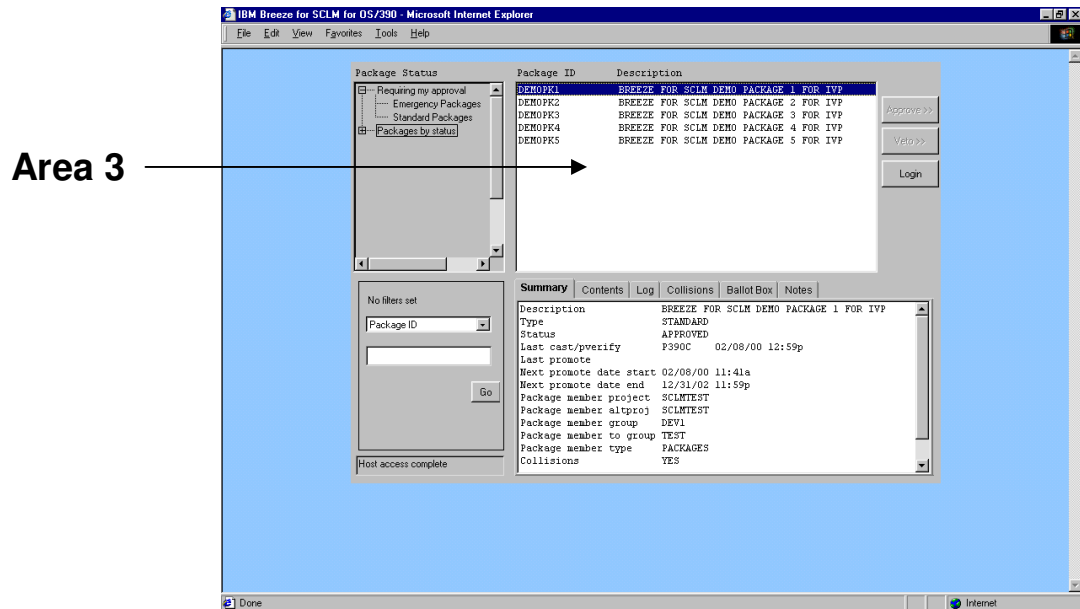
Note that if you select any of the date filters, you will be prompted with a slightly different filter panel, shown below, wherein you can enter start and end dates. The format for date entries is MM/DD/YY.

The screenshot shows a filter panel with the following elements:

- Text: "No filters set" and a "Reset" button.
- A dropdown menu with "Build Date" selected.
- Two rows of input fields for "start" and "end" dates.
- Labels "MM / DD / YY" below the input fields.
- A "Go" button.
- A status bar at the bottom displaying "Data access complete".

<b>Reset button</b>	The reset button will clear all filters.
<b>Input Field</b>	The input field is tied to the filtering options selected above, and the inputs must be in the required format (see descriptions above).
<b>Status Window</b>	The status window displays communications messages throughout the product session. These messages will reflect contact between Breeze for SCLM and the Breeze HTTP server, and will display any communication errors.

## Area 3: Package Area



The package area contains:

A display-only area that reflects the results of your package query. If filters were not in effect, then the display will reflect the in-box selection. If filters were in effect, the display will reflect those limits.

Approve and Veto functionality

### Approving and Vetoing Packages

When you first launch the Breeze for SCLM product, the Approve and Veto buttons will be grayed out, i.e., unavailable, as shown in the figure above. The buttons become functional only when you select a package id by left clicking on it.

### Approving Packages

The process for approving packages in Breeze for SCLM is four-fold:

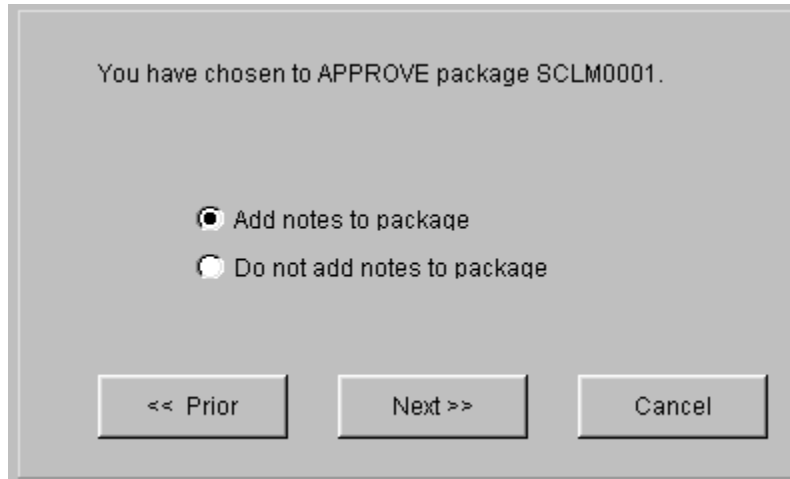
1. Select a package id
2. Left-click on the Approve button, to launch the package approval dialog box, shown below.
3. Choose whether or not to add notes to the package.
4. Submit the package for approval.

## Select a Package ID

To activate the Approve button, select a package id from the package area by left clicking on it.

## Launch the Approve Dialog Box

Left-click on the Approve button to launch the approve dialog box, shown below.



## Approve Dialog Box Functionality

### You have chosen ...

The dialog box will always remind you of which package you are in the process of approving.

### Add Notes

You can choose to add notes to the package that you are approving. This is the default. If you select this option and click Next, an Add Notes dialog box, discussed below, will appear.

### Do not add notes

Selecting this option bypasses the add notes dialog box and takes you straight to the Submit panel, discussed below.

### <<Prior

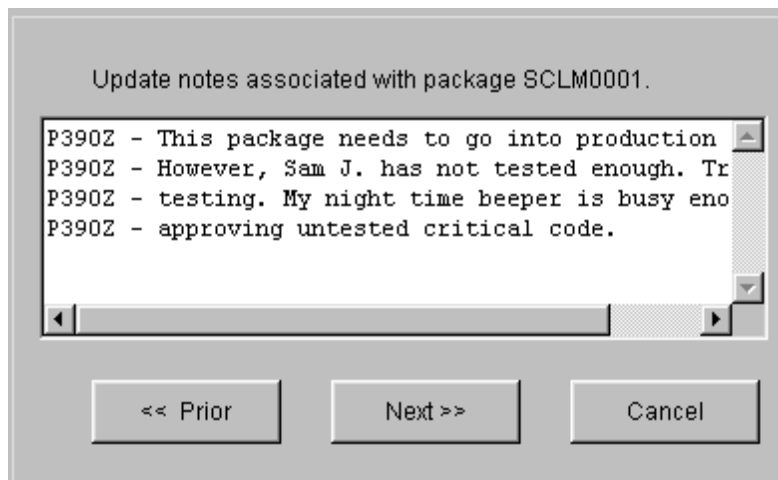
A left-click on this button will take you back to the Breeze for SCLM main interface.

Note that the <<Prior button acts much like an Escape key, in that it backs out of an action one layer at a time.

<b>Next&gt;&gt;</b>	If you chose to add notes, a left-click on this button will take you to the add notes dialog box.
<b>Cancel</b>	If you chose to not add notes, a left-click on this button will take you directly to the Submit panel. A left-click on this button will cancel the approval process and return you to the Breeze for SCLM main interface.

## Adding Notes

As mentioned previously, the The Add Notes panel, shown below, is launched when you select the Add Notes option in the Approve dialog box and click Next.



## Add Notes Panel Functionality

<b>Update Notes</b>	The dialog box will always prompt you with the package id of the package to which you are adding notes.
<b>Input field</b>	This is a free-form input field that supports hard returns. There is a limit of 480 characters.
<b>&lt;&lt;Prior</b>	A left-click on this button will take you back to the Approve dialog box.

Note that the <<Prior button acts much like an Escape key, in that it backs out of an action one layer at a time.

**Next>>**

A left-click on this button will take you to the Submit panel, shown below.

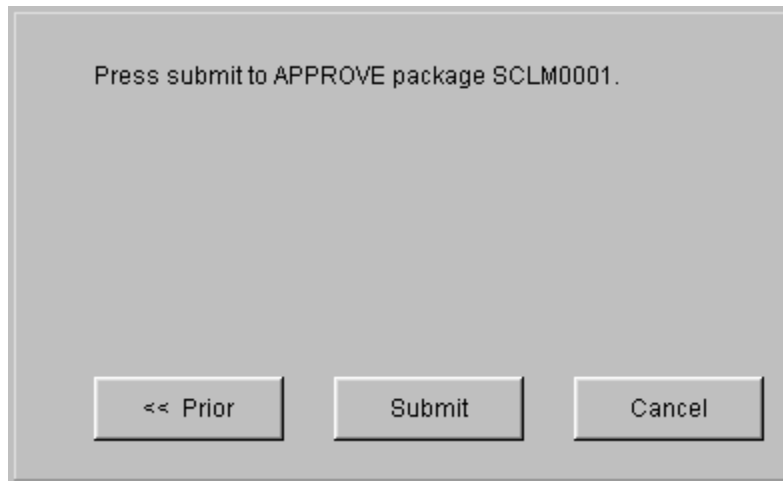
**Cancel**

A left-click on this button will cancel the approval process and return you to the Breeze for SCLM main interface.

**Submitting Approval**

Breeze for SCLM displays the submit panel, shown below, when either

- A. You click on Next from the Add Notes panel, or
- B. You select the "Do not add Notes" option from the Approve dialog box and click Next.



**Submit Panel Functionality**

**Press Submit...**

The dialog box will always remind you of the package you are in the process of approving.

**<<Prior**

If you chose to add notes to the package, a left-click on this button will take you back to the Add Notes dialog box. If you chose not to add notes to the package, a left-click on this button will take you back to the Approve dialog box.

Note that the <<Prior button acts much like an Escape key, in that it backs out of an action one layer at a time.

**Submit**

A left-click on this button will submit your vote of approval to the mainframe.

**Cancel**

A left-click on this button will cancel the entire approval process and return you to the Breeze for SCLM main interface.

**Vetoing Packages**

The process for vetoing packages in Breeze for SCLM is similar to the process of approving:

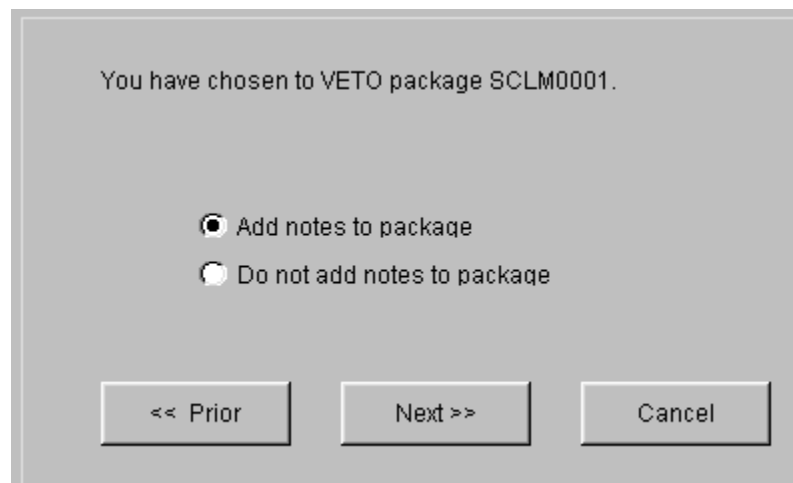
1. Select a package id
2. Left-click on the Veto button, to launch the Veto dialog box, shown below.
3. Choose whether or not to add notes to the package.
4. Submit your veto.

**Select a Package ID**

To activate the Veto button, select a package id from the package area by left clicking on it.

**Launch the Veto Dialog Box**

Left-click on the Veto button to launch the Veto dialog box, shown below.



## Veto Dialog Box Functionality

### You have chosen ...

The dialog box will always prompt you with the package id of the package you are vetoing.

### Add Notes

You can choose to add notes the package you are vetoing. This is the default. If you select this option and click Next, an Add Notes dialog box, discussed below, will appear.

### Do not add notes

Selecting this option bypasses the add notes dialog box and takes you straight to the Submit panel, discussed below.

### <<Prior

A left-click on this button will take you back to the Breeze for SCLM main interface.

Note that the <<Prior button acts much like an Escape key, in that it backs out of an action one layer at a time.

### Next>>

If you chose to add notes, a left-click on this button will take you to the add notes dialog box.

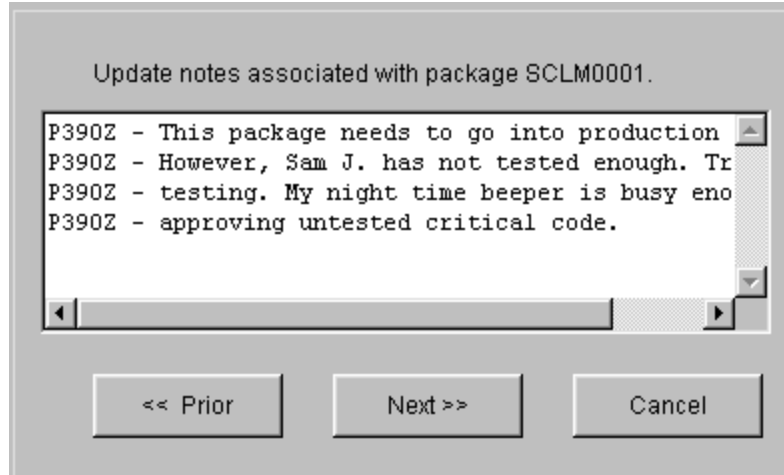
### Cancel

If you chose to not add notes, a left-click on this button will take you directly to the Submit panel.

A left-click on this button will cancel the veto process and return you to the Breeze for SCLM main interface.

## Adding Notes

As mentioned previously, the Add Notes panel, shown below, is launched when you select the Add Notes option in the Veto dialog box and click next.



## Add Notes Panel Functionality

### Update Notes ...

The dialog box will always prompt you with the package id of the package to which you are adding notes.

### Input field

This is a free-form input field that supports hard returns. There is a limit of 480 characters.

### <<Prior

A left-click on this button will take you back to the Veto dialog box.

### Next>>

A left-click on this button will take you to the Submit panel, shown below.

### Cancel

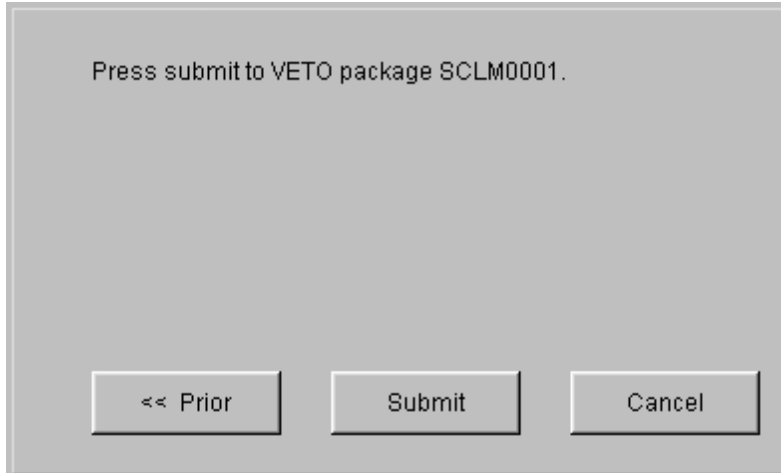
A left-click on this button will cancel the veto process and return you to the Breeze for SCLM main interface.

## Submitting a Veto

Breeze for SCLM displays the submit panel, shown below, when either

- A. You click on Next from the Add Notes panel, or
- B. You select the "Do not add Notes" option from the Veto dialog box and click Next.





## Submit Veto Panel Functionality

### Press Submit...

The dialog box will always remind you of the package you are in the process of vetoing.

### <<Prior

If you chose to add notes to the package, a left-click on this button will take you back to the Add Notes dialog box.

If you chose not to add notes to the package, a left-click on this button will take you back to the Veto dialog box.

Note that the <<Prior button acts much like an Escape key, in that it backs out of an action one layer at a time.

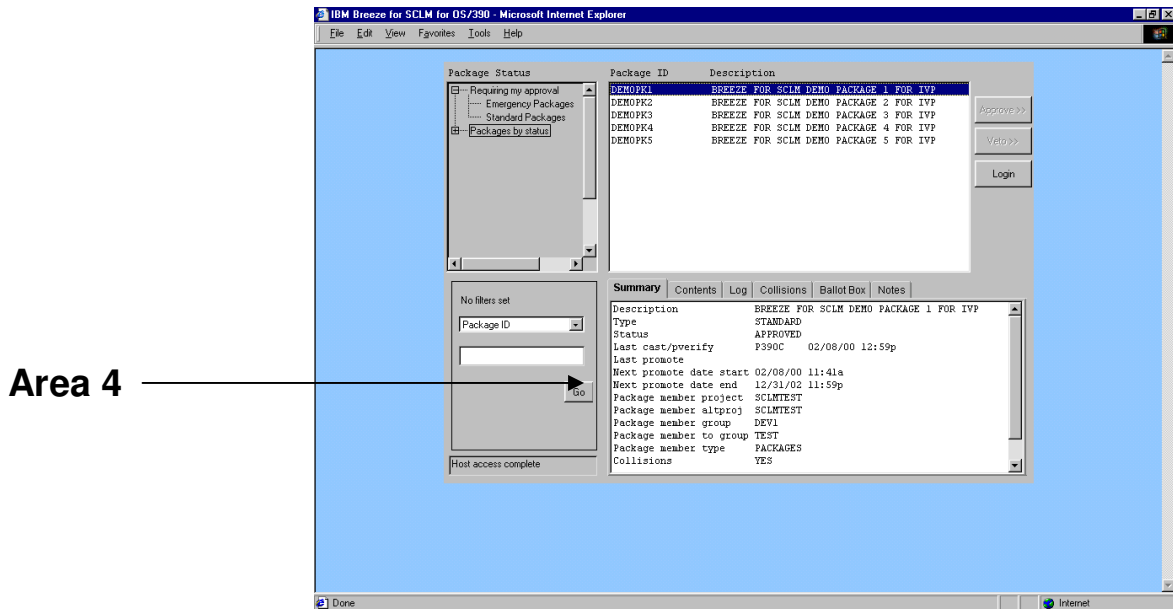
### Submit

A left-click on this button will submit your veto to the mainframe.

### Cancel

A left-click on this button will cancel the entire veto process and return you to the Breeze for SCLM main interface.

## Area 4: Package Options Area



The tabbed Package Options area contains highly detailed package information, including contents, log, collision information, ballot box and package notes.

These tabbed areas become active when you select a package id in the Package Display area of the Breeze for SCLM interface.

### Package Summary

The Package Summary tab contains the following package information:

<b>Description</b>	The description given to the package when it was built.
<b>Type</b>	Indicates whether the package is a Standard or Emergency Package.
<b>Status</b>	Indicates the status of the package as either in-edit, in-approval, approved, vetoed, in-promotion, promoted, or committed.
<b>Cast-pverify Date</b>	This row contains the date, time and user id information about the last time the package was CAST at the Pre-verify exit point.

**Last Promote Date**

This row contains the date, time and user id of the person who promoted the package.

**Next Promote Execute Start**

Indicates the beginning of the execution window for the next promote.

**Next Promote Execute End**

Indicates the ending range of the execution window for the next promote.

**Package project**

The project where the package member resides.

**Package alt project**

The alternate project where the package member resides.

**Package group**

The “source” group for the package promote.

**Package to group**

The “target” group of the package promote.

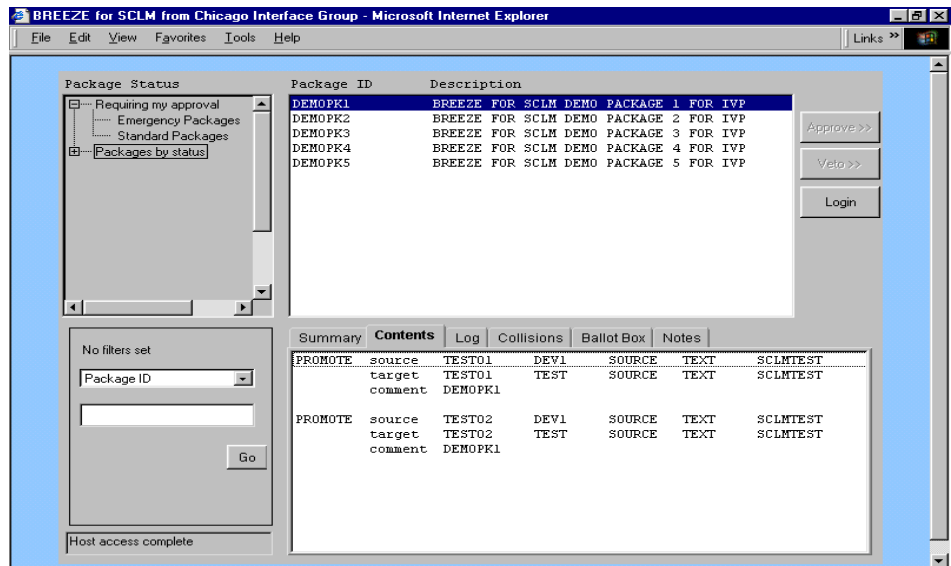
**Package type**

The package member type.

**Collision status**

Indicates whether or not the current package is in collision with any other packages.

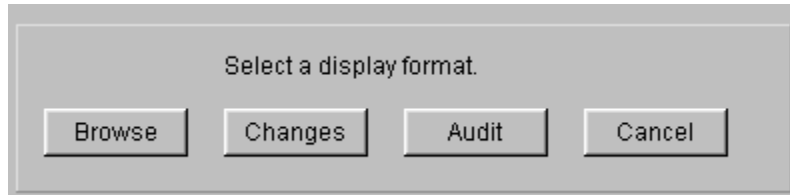
## Package Contents



The Package Contents tab contains action and inventory information about the members in the current package. For example, the below figure indicates that member COBOL1 was promoted from DEV1 Source location to a TEST location.

## Browse, Audit, Changes

Additionally within the package area, users have the option to browse component -level data, such as audit and change information. A double-click on either the source or target information in the Package Contents tab will cause Breeze to launch the display format options box shown below, from which users can choose a data viewing level.



When a user selects one of these options, Breeze launches another browser window and loads specific browse, audit or change data.

## Browse

```
Instant Message WebMail Radio People Yellow Pages Download Calendar
BREEZE FOR SCLM
BROWSE MEMBER REQUEST
DSN = SCLMTEST.DEV1.SOURCE
MEMBER = TEST02 PROJECT = SCLMTEST GROUP = DEV1 TYPE = SOURCE

-----*
/* NAME: C@USER1 *
/* NOTES: FILE TAILORING WILL BE PERFORMED FOR THIS MEMBER. *
/* PURPOSE: BUILD LOAD SYNTAX FOR NON-EXCLUDED TABLE MEMBERS. *
/* -----*
/* SYNTAX: ALLOCATE AND POPULATE THE SYNTAX DD HERE. *
/* THIS STEP USES THE WTBL4DOT VARIABLE PASSED FROM THE APPLICATION.*
/* PURPOSE: PERFORM LOAD OR INCREMENTAL LOAD FOR REPLACED TEXT. *
/* -----*
/* TO USE THIS SKELETON, YOU MUST: *
/* 1) MAKE SURE THAT THE STEPLIB POINTS TO YOUR ENDEAVOR *
/* AUTHORIZED DATASET AND INCLUDES THE DATASET THAT *
/* CONTAINS CIGINI AND CIGFEXEC. *
/* 2) MAKE SURE THAT THE CONLIB POINTS YOUR ENDEAVOR *
/* CONLIB DATASET *
/* 3) CHANGE FLHQ1, FLHQ2, QUAL1 AND QUAL2 AS PER YOUR *
/* INSTALLATION SHEET *
/* 4) CHANGE THE UNIT=TDISK TO THE APPROPRIATE UNIT *
/* NAME. *
```

## Audit

```

Instant Message WebMail Radio People Yellow Pages Download Calendar Ch
BREEZE FOR SCLM
REQUEST FOR AUDIT INFORMATION
MEMBER = TEST01 PROJECT = SCLMTEST GROUP = DEV1 TYPE = SOURCE
BREEZE FOR SCLM AUDIT REPORT

PROJECT : CIGT          STATUS      : EDITABLE      MEM VERSION  : 9
ALTPROJ : CIGT          CHANGE DATE : 99/12/28     CHG VERSION  : 60
GROUP   : GH            CHANGE TIME : 12:07:00     AUTH CODE    : DEV
TYPE    : SRCLIB        CHANGE USER : P390J          CHANGE CODE   : SCLMJFJP
LANGUAGE : TEXT          CREATE DATE  : 98/10/24     PROMOTE DATE  : 99/12/15
MEMBER  : PKGDSECT      CREATE TIME  : 13:57:45     PROMOTE TIME  : 17:04:00

```

## Changes

```

Instant Message WebMail Radio People Yellow Pages Download Calendar Channels
BREEZE FOR SCLM
REQUEST IS FOR CHANGES PROCESSING
MEMBER = TEST01 PROJECT = SCLMTEST GROUP = DEV1 TYPE = SOURCE

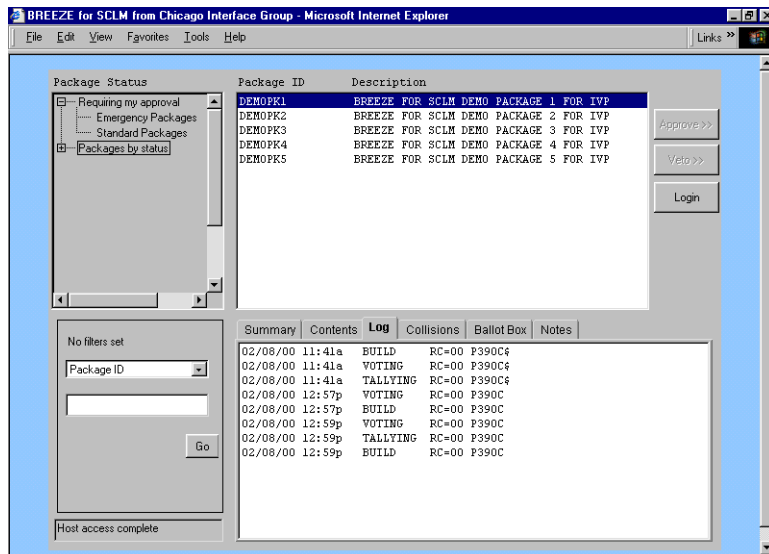
ISRSUPC - MVS/PDF FILE/LINE/WORD/BYTE/SFOR COMPARE UTILITY- ISPF FOR OS/390      2000/01/14  12.08
NEW: SCLMTEST.DEV1.SOURCE(TEST01)      OLD: SCLMTEST.TEST.SOURCE(TEST01)

LISTING OUTPUT SECTION (LINE COMPARE)

ID      SOURCE LINES                                     TYPE  LEN N-LN#  O-LN#
-----+-----+-----+-----+-----+-----+-----+-----+-----+-----
I - BREEZE FOR SCLM FROM CHICAGO INTERFACE GROUP, INC.      00001005  INS= 13 00001 00001
I - *                                                         00005005                00002
I - *                                                         00005105                00003
I - *                                                         00005205                00004
I - *                                                         00006005                00005
I - THE PURPOSE OF THIS MEMBER IS TO SHOW THE CHANGES FUNCTION FOR BREEZE. 00007005                00006
I - CHANGES WILL BE IN THE FORM OF INSERTS (I), DELETES (D), OR FORMAT (RN).00009005                00007
I - FOR LARGE MEMBERS THERE WILL BE CHANGE SECTIONS CONTAINING CHANGES. 00009135                00008
I - *                                                         00010005                00009
I - THIS IS A TEST MEMBER                                     00011005                00010
I - * THIS IS A TEST MEMBER FROM THE FIELD                   00020005                00011
I - * THIS IS A TEST MEMBER FROM DEVELOPMENT                 00010000  DEL= 4 00002 00001
D - THIS IS A TEST MEMBER FROM THE FIELD                   00020001                00002
D - THIS IS A TEST MEMBER FROM DEVELOPMENT

```

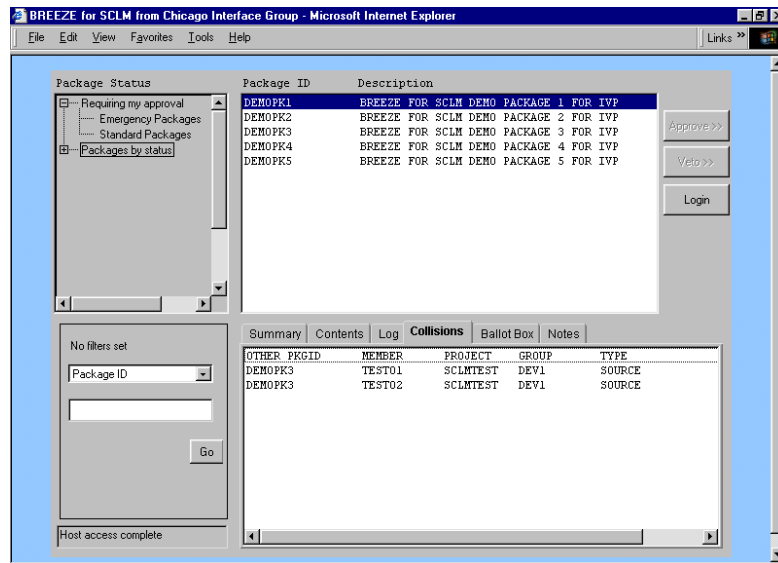
## Package Log



The Package Log tab contains standard log information, including:

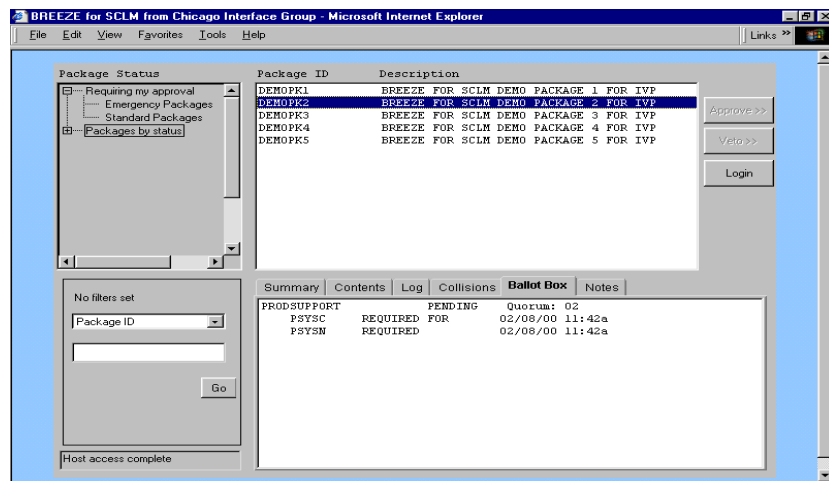
- the date and time of any package actions
- the user id of the user who performed those actions
- the return code on the action.

## Package Collisions



The Package Collisions tab contains highly detailed collision information about the current package, including which members are causing the collision. The collision may be current or historic depending on the status and location of the package.

## Ballot Box

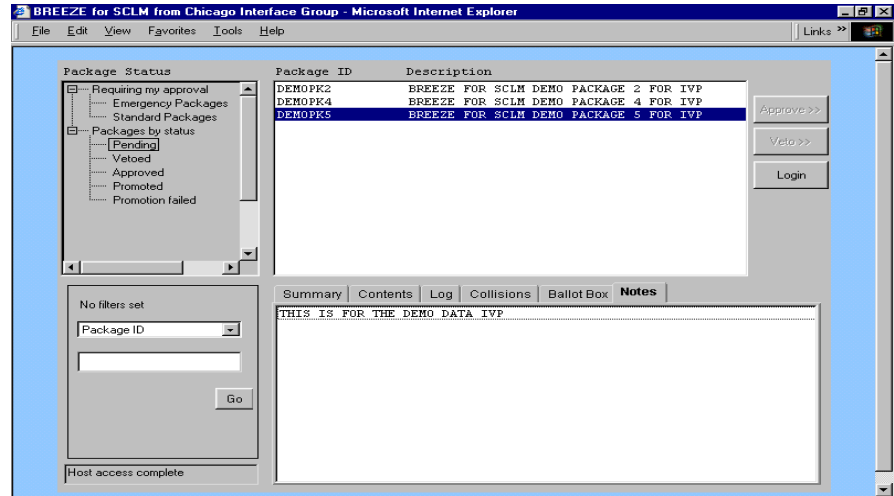


The Ballot Box is useful for determining at a glance:

- Which approver group is responsible for approving or vetoing the current package
- What users are in that particular approver group
- Who has voted
- How and when those approvers have voted
- Whether or not a quorum has been reached.

## Package Notes

The Package Notes tab contains free-form notes that have been added to the package by members of the approver group during the approval process.



---

# Chapter 4: Troubleshooting

## Overview

The following pages provide detailed information relating to error situations you might encounter in utilizing the Breeze for SCLM product. These situations are presented in the order that you are likely to encounter them. Additionally, they are presented alphabetically in the index at the back of the chapter.

### **Class/Jar Not Found or Class/Jar Can't Load**

#### **Problem or informational message**

In the process of launching the Breeze for SCLM product, you get one of the following messages from the browser that the Class/Jar/Zip file can't be found or can't be loaded.

#### **Corrective Measures**

Likely there is an error in the html file related to the location of the Breeze for SCLM product on your mainframe.

Modify the HTML file to ensure that the jar name is correct and that both the IP and the port address are correct.

If using Netscape Navigator, verify that you have chosen to launch the correct version of Breeze for SCLM.



## No Response

### Problem or informational message

In the process of launching the Breeze for SCLM product, you get no response from the server.

### Corrective Measures

Check your HTML file to ensure that both the IP and the port address are correct. Note that the port address cannot have leading zeroes.

#### **If you're running Breeze for SCLM on an Intranet:**

Make sure that the Breeze HTTP server is up and running on the mainframe.

#### **If you're running Breeze for SCLM on the Internet:**

Make sure that the Breeze HTTP server is up and running on the mainframe. Additionally, you may want to check with your ISP; traffic on the line or a problem in routing to your mainframe IP address could also prevent the Breeze for SCLM applet from loading.

## Not Allowed to Use Applet or Security Error

### Problem or informational message

The message "not allowed to use applet" appears in the status window of your browser, or you receive some other error related to security.

### Corrective Measures

This is likely a firewall issue that will affect intranet users. Contact your systems or LAN administrator for assistance.

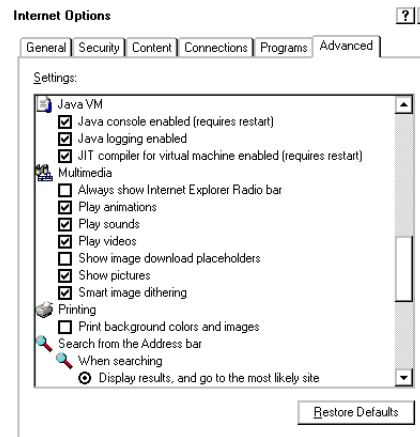
<p><b>Log In Fails</b></p>	<p><b>Problem or informational message</b>            If your log in fails, it could be due to a number of factors:</p> <p>Security error.</p> <p>A failed log in could also mean that your user id and/or password combination is incorrect, or that your tso password has expired.</p> <p>The IP and /or port address in the Breeze for SCLM.html file could be incorrect.</p>	<p><b>Corrective Measures</b></p> <p>Re-launch the product and make sure you enter the correct mainframe user id and password.</p> <p>If log in still fails, see your systems administrator for help in validating your user id/password.</p> <p>Modify the HTML file to ensure that both the IP and the port address are correct.</p>
<p><b>JCL Errors</b></p>	<p><b>Problem or informational message</b>            JCL setup error from the Breeze for SCLM mainframe component.</p>	<p><b>Corrective Measures</b></p> <p>Three pieces of JCL are required for the Breeze for SCLM product:</p> <ul style="list-style-type: none"> <li>• BZZSMSRV</li> <li>• BZZSMPKG</li> <li>• BZZSMPRT</li> </ul> <p>Check to make sure that these have all been correctly modified.</p>
<p><b>Storage Errors</b></p>	<p><b>Problem or informational message</b>            Any storage errors will originate from the mainframe component of the Breeze for SCLM product.</p>	<p><b>Corrective Measures</b></p> <p>Check the region size allocated in the CIGINI, or check with your systems administrator.</p>

## Java not Enabled on Browser or Virtual Machine Not Loaded

### Problem or informational message

Breeze for SCLM is a Java-based product, which requires that your browser be configured to read the Java language and that the Virtual Machine (the equivalent of the Java runtime environment) be loaded.

Netscape Navigator versions 4.5 and later are already Java-enabled, so this error condition applies to Internet Explorer users only.



### Corrective Measures

For IE users:

From the Explorer Tools menu:

- Select Internet Options
- Select the Advanced tab.
- Scroll down until you see the options for Java VM, which will read the Breeze for SCLM applet.

- Select the first two boxes under this option

Restart your computer. A sample IE screen with the Java options enabled is shown at left.

## CIGINI Errors

### Problem or informational message

CIGINI error. If there is a problem with your CIGINI file in the mainframe component of Breeze for SCLM, you will encounter this message on your first query.

Dataset allocation error.

### Corrective Measures

Check the CIGINI file for a valid product password.

Check your CIGINI parameters for vio and work files.

## TCP/IP Errors

### Problem or informational message

Any storage errors will originate from the mainframe component of the Breeze for SCLM product.

IP address incorrect.

Assigned port incorrect.

### Corrective Measures

Check the region size allocated in the CIGINI, or check with your systems administrator.

Check IP address in html file.

Check port address in html file.

## Email Errors

### Problem or informational message

### Corrective Measures

SMTP server may not be set up correctly or might not be set up at all. Check with systems personnel to run email test program TSTEMAIL. Incorrect email list in \$\$SMTP. Verify that email list exists.

## Query Errors

### Problem or informational message

### Corrective Measures

Request yields no results.

This is possibly a JCL error. Verify that required JCL members have been modified correctly.

This could also be a job-card error. Verify that job-card values are correct.

## Data Display Errors

### Problem or informational message

### Corrective Measures

Data displays incorrectly. Data returned is not what you requested.

This is likely due to a set-up error. Verify that all steplibs are pointing to

---

# Index

applet, 35, 37  
Approver, 3  
Approvers, 3, 4  
Approving, 14, 20  
Assigning approvers, 2  
Email, 3, 4, 38  
Filtering, 18  
Group, i  
Jar, 34  
Java, 37  
notification, 2, 3, 4  
package, 1, 2, 3, 5, 7, 9, 11, 13, 14, 15, 16, 17, 18, 19, 20, 21, 22,  
23, 24, 25, 26, 27, 28, 29, 30, 31, 32, 33  
Package Types, 2  
packages, 1, 2, 4, 5, 9, 13, 14, 15, 16, 17, 20, 24, 29  
promote, 7, 13  
SCLM, 1, 2, 3, 5, 6, 7, 11, 12, 13, 14, 15, 16, 17, 18, 19, 20, 21, 22,  
23, 24, 25, 26, 27, 28, 34, 35, 36, 37, 38  
Security, 35, 36  
Standard, 2, 16, 28  
Vetoing, 20, 24